

✓ Each course day provides **6 CPD credits** in accordance with the CPD Scheme of the **Royal College of Radiologists**.
For All 5 Days: **30 CPD Credits**.

The Stanmore In-depth MSK MRI Study Series 2019

organised by Infomed Research and Training
in partnership with The Royal National Orthopaedic Hospital NHS Trust,
taking place at a venue in central London

*A series of five practical, case-based, study days for
Consultant Radiologists and Orthopaedic Surgeons*

Shoulder

Tuesday 19 February 2019

Elbow, Wrist & Hand

Tuesday 19 March 2019

Pelvis & Hip

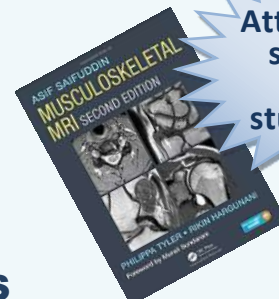
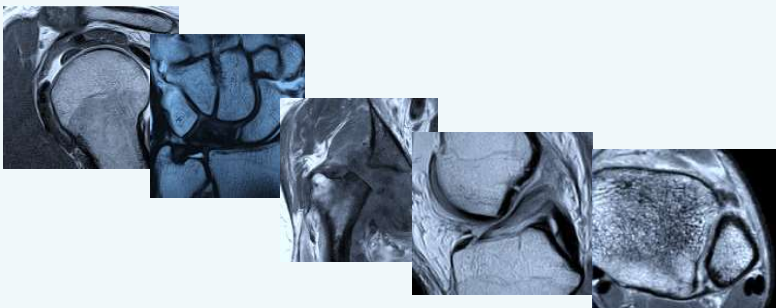
Wednesday 12 June 2019

Knee

Wednesday 11 September 2019

Foot & Ankle

Monday 2 December 2019



Attend one,
some or
all five
study days

COURSE DIRECTORS

Dr Asif Saifuddin, Consultant MSK Radiologist,
Royal National Orthopaedic Hospital, Stanmore

Dr Philippa Tyler, Consultant MSK Radiologist,
Royal National Orthopaedic Hospital, Stanmore

Course highlights

- You will be taught by leading experts.
Faculty of practicing Consultant MSK Radiologists from The Royal National Orthopaedic Hospital, Stanmore, all experts in their fields, with extensive experience in advanced MSK MRI imaging and teaching at a national and international level.
- **The senior Faculty includes the authors** of the highly appraised and well-known textbook and reference guide: *Musculoskeletal MRI*.
- Delegates **attending all five days are entitled to a complimentary copy of *Musculoskeletal MRI, 2nd edition***, authored by the course directors.
- **A cutting edge practical** course, largely involving workstation **case-based learning**, supplemented with **in depth lectures**.
- **Comprehensive** – covering a full range of imaging topics relating to each respective joint.
- **True peer interaction/learning** – 2 attendees per iMac workstation and a limited number of delegates.
- Stimulating and **challenging cases**.

Series aim

The series aims at providing Consultant Radiologists with an interest in MSK and Orthopaedic Surgeons, with a series of **practical and stimulating and cutting-edge** MSK MRI study days, each providing **in depth coverage of a major anatomic division or joint. Workstation case-based learning with challenging cases** covering a full range of pathologies.

Each study day is stand-alone to ensure that delegates get an in-depth specialist knowledge of each joint. Delegates can choose to attend one, some or all dates in the series.

Target audience

The series is pitched at a level suitable for **Consultant Radiologists and Orthopaedic Surgeons** involved in interpreting MSK MRI in their clinical practice, and **who are looking to excel in their knowledge and MRI interpretation skills in one or more specific joints**, including Radiologists who are specialising or have specialised in MSK and are looking to develop further their skills in one or more specific joints.

Learning outcomes

By the end of each course, the attendee will have:

- a comprehensive and in depth understanding of best practice in advanced MSK MRI imaging in the respective joint
- vastly improved MSK MRI interpretation skills
- greater confidence in his/her advanced MSK MRI practice

Sessions

Lectures: short and sharp talks.

Interactive cases: the session lead gives a brief introduction, encouraging a systematic approach to interpretation, and then takes delegates through each case; for each case, the session lead prompts delegates –working in pairs at iMac workstations– to interpret each case, and then –on the big screen– feeds back to the whole group, highlighting top tips and take-home messages.

CPD

Each course day provides **6 CPD credits** in accordance with the CPD Scheme of the Royal College of Radiologists. For all 5 Days: **30 CPD credits**.

DAY 1
SHOULDER MSK MRI
Tuesday 19 February 2019

08.40 – 09.10 **Registration**

09.10 – 09.15

Welcome and Introduction

Dr Philippa Tyler,

Consultant Musculoskeletal Radiologist,
Royal National Orthopaedic Hospital, Stanmore

09.15 – 09.40

**Presentation and Management
of Common Shoulder Disorders**

Mr David Butt,

Consultant Orthopaedic Surgeon,
Royal National Orthopaedic Hospital, Stanmore

09.40 – 10.00

The Sub-Acromial Space: Anatomy & Pathology

Dr Asif Saifuddin,

Consultant Musculoskeletal Radiologist,
Royal National Orthopaedic Hospital, Stanmore

10.00 – 10.20

The Anterior Shoulder: Anatomy & Pathology

Dr Asif Saifuddin,

Consultant Musculoskeletal Radiologist,
Royal National Orthopaedic Hospital, Stanmore

10.20-10.40

Shoulder Instability: Anatomy & Pathology

Dr Asif Saifuddin,

Consultant Musculoskeletal Radiologist,
Royal National Orthopaedic Hospital, Stanmore

10.40 - 11.00 **Tea and coffee break**

11.00 – 12.10

Interactive Cases

Cases covering a range of pathologies and abnormal presentations, with personalised guidance and immediate feedback

12.10 – 12.30

**The Superior Labrum and Biceps-Labral Complex:
Anatomy & Pathology**

Dr Asif Saifuddin,

Consultant Musculoskeletal Radiologist,
Royal National Orthopaedic Hospital, Stanmore

12.30 – 12.50

Miscellaneous Shoulder Pathology

Dr Sajid Butt,

Consultant Musculoskeletal Radiologist,
Royal National Orthopaedic Hospital, Stanmore

12.50 – 13.50 **Lunch**

13.50 – 15.00

Interactive Cases

Cases covering a range of pathologies and abnormal presentations, with personalised guidance and immediate feedback

15.00 – 15.20 **Tea and coffee break**

15.20 – 15.40

**The ACJ, SCJ and Scapulo-Thoracic Articulation:
Anatomy and Pathology**

Dr Bhavin Upadhyay,

Consultant Musculoskeletal Radiologist,
Royal National Orthopaedic Hospital, Stanmore

15.40 – 16.00

The Post-Operative Shoulder

Dr Sajid Butt,

Consultant Musculoskeletal Radiologist,
Royal National Orthopaedic Hospital, Stanmore

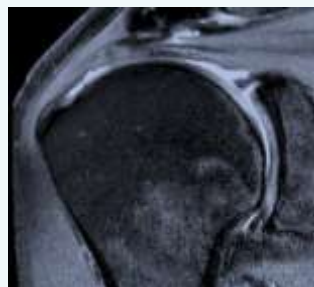
16.00 – 17.00

Interactive Cases

Cases covering a range of pathologies and abnormal presentations, with personalised guidance and immediate feedback

17.00

**Collection of Certificates of
Attendance and Close**



▲ Articular-side rotator cuff tear



▲ Thick rotator interval capsule

DAY 2
ELBOW, WRIST & HAND MSK MRI
Tuesday 19 March 2019

08.40 – 09.10 **Registration**

09.10 – 09.15

Welcome and Introduction

Dr Philippa Tyler,

Consultant Musculoskeletal Radiologist,
Royal National Orthopaedic Hospital, Stanmore

09.15 – 09.40

**Presentation and Management
of Common Wrist Disorders**

Mr Max Horowitz,

Consultant Hand Surgeon,
Chelsea and Westminster Hospital NHS Foundation Trust

09.40 – 10.00

The Elbow: Osseous Anatomy & Pathology

Dr Anastasia Fotiadou,

Consultant Musculoskeletal Radiologist,
Royal National Orthopaedic Hospital, Stanmore

10.00 – 10.20

**The Elbow Ligaments and Tendons:
Anatomy & Pathology**

Dr Gajan Rajeswaran,

Consultant Musculoskeletal Radiologist,
University College London Hospitals NHS Foundation Trust

10.20 – 11.30

Interactive Cases

Cases covering a range of elbow and wrist pathologies
and abnormal presentations, with personalised guidance
and immediate feedback

11.30 – 11.50 **Tea and coffee break**

11.50 – 12.10

Miscellaneous Elbow Conditions

Dr Philippa Tyler,

Consultant Musculoskeletal Radiologist,
Royal National Orthopaedic Hospital, Stanmore

12.10 – 12.30

The Wrist: Osseous Anatomy & Pathology

Dr Asif Saifuddin,

Consultant Musculoskeletal Radiologist,
Royal National Orthopaedic Hospital, Stanmore

12.30 – 12.50

The Wrist: TFCC and Intrinsic Ligaments

Dr Gajan Rajeswaran,

Consultant Musculoskeletal Radiologist,
University College London Hospitals NHS Foundation Trust

12.50 – 13.50 **Lunch**

13.50 – 15.00

Interactive Cases

Cases covering a range of elbow and wrist pathologies
and abnormal presentations, with personalised guidance
and immediate feedback

15.00 – 15.20 **Tea and coffee break**

15.20 – 15.40

The Wrist: Soft Tissue Pathology

Dr T Muthukumar,

Consultant Musculoskeletal Radiologist,
Royal National Orthopaedic Hospital, Stanmore

15.40 – 16.00

Arthropathy of the Wrist and Hand

Dr Miny Walker,

Consultant Musculoskeletal Radiologist,
St Mary's Hospital, London

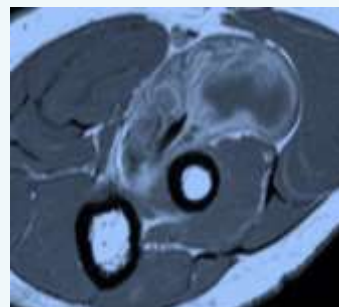
16.00 – 17.00

Interactive Cases

Cases covering a range of hand and wrist pathologies
and abnormal presentations, with personalised guidance
and immediate feedback

17.00

**Collection of Certificates of
Attendance and Close**



▲ Bicipito-radial bursitis



▲ Kienbock's disease

DAY 3
PELVIS & HIP MSK MRI
Wednesday 12 June 2019

08.40 – 09.10 **Registration**

09.10 – 09.15

Welcome and Introduction

Dr Philippa Tyler,
Consultant Musculoskeletal Radiologist,
Royal National Orthopaedic Hospital, Stanmore

09.15 – 09.40

Management of Common Hip Disorders

Mr Tahir Khan,
Consultant Orthopaedic Surgeon,
Royal National Orthopaedic Hospital, Stanmore

09.40 – 10.00

The Bony Pelvis: Miscellaneous Conditions

Dr Asif Saifuddin,
Consultant Musculoskeletal Radiologist,
Royal National Orthopaedic Hospital, Stanmore

10.00 – 10.20

The Hip Joint: Osseous Anatomy & Pathology

Dr Philippa Tyler,
Consultant Musculoskeletal Radiologist,
Royal National Orthopaedic Hospital, Stanmore

10.20 – 11.30

Interactive Cases

Cases covering a range of pathologies and abnormal presentations, with personalised guidance and immediate feedback

11.30 – 11.50 **Tea and coffee break**

11.50 – 12.10

The Hip Joint: Soft Tissue Anatomy & Pathology

Dr Michele Calleja,
Consultant Musculoskeletal Radiologist,
Royal National Orthopaedic Hospital, Stanmore

12.10 – 12.30

**The Pelvic Muscles & Tendons:
Anatomy & Pathology**

Dr T Muthukumar,
Consultant Musculoskeletal Radiologist,
Royal National Orthopaedic Hospital, Stanmore

12.30 – 12.50

The Paediatric Hip

Dr Asif Saifuddin,
Consultant Musculoskeletal Radiologist,
Royal National Orthopaedic Hospital, Stanmore

12.50 – 13.50 **Lunch**

13.50 – 15.00

Interactive Cases

Cases covering a range of pathologies and abnormal presentations, with personalised guidance and immediate feedback

15.00 – 15.20 **Tea and coffee break**

15.20 - 15.40

Post-Operative Hip MRI

Dr Michael Khoo,
Consultant Musculoskeletal Radiologist,
Royal National Orthopaedic Hospital, Stanmore

15.40 – 16.00

Imaging Assessment of the Painful THR

Dr Bhavin Upadhyay,
Consultant Musculoskeletal Radiologist,
Royal National Orthopaedic Hospital, Stanmore

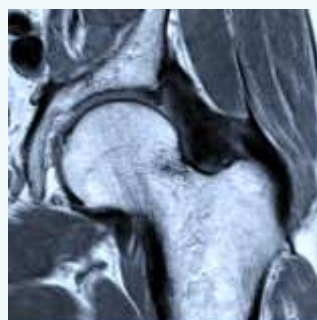
16.00 – 17.00

Interactive Cases

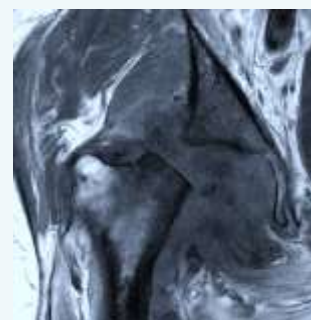
Cases covering a range of pathologies and abnormal presentations, with personalised guidance and immediate feedback

17.00

**Collection of Certificates of
Attendance and Close**



▲ Adhesive capsulitis



▲ Rapidly progressive coxarthrosis

DAY 4

KNEE MSK MRI

Wednesday 11 September 2019

08.40 – 09.10 **Registration**

09.10 – 09.15

Welcome and Introduction

Dr Asif Saifuddin,

Consultant Musculoskeletal Radiologist,
Royal National Orthopaedic Hospital, Stanmore

09.15 – 09.40

**Presentation and Management of
Meniscal and Ligaments Injuries**

Prof John Skinner,

Consultant Orthopaedic Surgeon,
Royal National Orthopaedic Hospital, Stanmore

09.40 – 10.00

The Menisci: Anatomy & Pathology

Dr Asif Saifuddin,

Consultant Musculoskeletal Radiologist,
Royal National Orthopaedic Hospital, Stanmore

10.00 – 10.20

The Ligaments: Anatomy & Pathology

Dr Philippa Tyler,

Consultant Musculoskeletal Radiologist,
Royal National Orthopaedic Hospital, Stanmore

10.20 – 11.30

Interactive Cases

Cases covering a range of pathologies and abnormal presentations, with personalised guidance and immediate feedback

11.30 – 11.50 **Tea and coffee break**

11.50 – 12.10

The Extensor Mechanism: Anatomy & Pathology

Dr Sajid Butt,

Consultant Musculoskeletal Radiologist,
Royal National Orthopaedic Hospital, Stanmore

12.10 – 12.30

**The Knee Cartilage & Sub-Chondral Bone:
Anatomy & Pathology**

Dr Asif Saifuddin,

Consultant Musculoskeletal Radiologist,
Royal National Orthopaedic Hospital, Stanmore

12.30 – 12.50

Solid & Cystic Masses

Dr Ian Pressney,

Consultant Musculoskeletal Radiologist,
Royal National Orthopaedic Hospital, Stanmore

12.50 – 13.50 **Lunch**

13.50 – 15.00

Interactive Cases

Cases covering a range of pathologies and abnormal presentations, with personalised guidance and immediate feedback

15.00 – 15.20 **Tea and coffee break**

15.20 – 15.40

Post-Operative Knee MRI

Dr Faisal Alyas,

Consultant Musculoskeletal Radiologist,
Royal National Orthopaedic Hospital, Stanmore

15.40 – 16.00

Imaging Assessment of the Painful TKR

Dr Michael Khoo,

Consultant Musculoskeletal Radiologist,
Royal National Orthopaedic Hospital, Stanmore

16.00 – 17.00

Interactive Cases

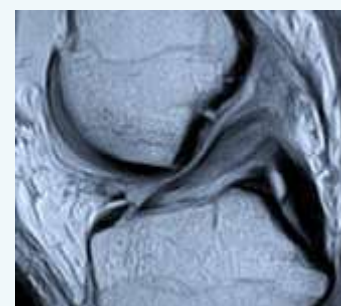
Cases covering a range of pathologies and abnormal presentations, with personalised guidance and immediate feedback

17.00

**Collection of Certificates of
Attendance and Close**



▲ Tear posterior medial meniscal root



▲ Femoral avulsion ACL

DAY 5
FOOT & ANKLE MSK MRI
Monday 2 December 2019

08.40 – 09.10 **Registration**

09.10 – 09.15

Welcome and Introduction

Dr Philippa Tyler,

Consultant Musculoskeletal Radiologist,
Royal National Orthopaedic Hospital, Stanmore

09.15 – 09.40

**Presentation and Management
of Common Ankle Disorders**

Mr Matt Welck,

Consultant Orthopaedic Surgeon,
Royal National Orthopaedic Hospital, Stanmore

09.40 – 10.00

The DTF & Ankle Joints: Anatomy & Pathology

Dr Asif Saifuddin,

Consultant Musculoskeletal Radiologist,
Royal National Orthopaedic Hospital, Stanmore

10.00 – 10.20

The Ankle: Impingement Syndromes

Dr Michele Calleja,

Consultant Musculoskeletal Radiologist,
Royal National Orthopaedic Hospital, Stanmore

10.20 – 11.30

Interactive Cases

Cases covering a range of pathologies and abnormal presentations, with personalised guidance and immediate feedback

11.30 – 11.50 **Tea and coffee break**

11.50 – 12.10

The Ankle Tendons: Anatomy & Pathology

Dr T Muthukumar,

Consultant Musculoskeletal Radiologist,
Royal National Orthopaedic Hospital, Stanmore

12.10 – 12.30

The Hindfoot: Anatomy & Pathology

Dr Anastasia Fotiadou,

Consultant Musculoskeletal Radiologist,
Royal National Orthopaedic Hospital, Stanmore

12.30 – 12.50

The Post-Operative Ankle

Dr Sajid Butt,

Consultant Musculoskeletal Radiologist,
Royal National Orthopaedic Hospital, Stanmore

12.50 – 13.50 **Lunch**

13.50 – 15.00

Interactive Cases

Cases covering a range of pathologies and abnormal presentations, with personalised guidance and immediate feedback

15.00 – 15.20 **Tea and coffee break**

15.20 – 15.40

The Midfoot

Dr Faisal Alyas,

Consultant Musculoskeletal Radiologist,
Royal National Orthopaedic Hospital, Stanmore

15.40 – 16.00

The Forefoot

Dr Paul O'Donnell,

Consultant Musculoskeletal Radiologist,
Royal National Orthopaedic Hospital, Stanmore

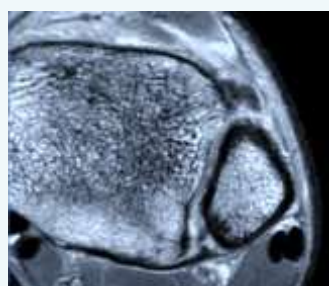
16.00 – 17.00

Interactive Cases

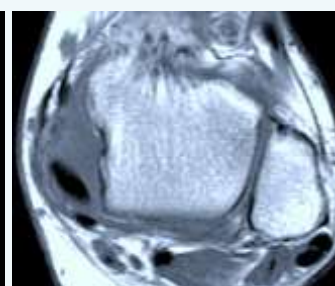
Cases covering a range of pathologies and abnormal presentations, with personalised guidance and immediate feedback

17.00

**Collection of Certificates of
Attendance and Close**



▲ Acute rupture AITFL



▲ Posteromedial impingement

The Faculty

A Faculty of established, practicing consultant radiologists and surgeons, all experts in their fields, with long and extensive experience in advancing the MSK MRI skills of peers nationally and internationally.



**Dr Asif Saifuddin, Consultant Musculoskeletal Radiologist,
Royal National Orthopaedic Hospital, Stanmore**

Asif Saifuddin, BSc (Hons), MBChB, MRCP, FRCR, is a consultant musculoskeletal radiologist at the Royal National Orthopaedic Hospital NHS Trust in Stanmore, UK. He earned his medical degree from The University of Manchester Medical School, undertook his radiology training in Leeds, and obtained a Fellowship of The Royal College of Radiologists. He is primarily interested in all aspects of musculoskeletal radiology, but in particular diagnostic and interventional imaging of musculoskeletal tumours.



**Dr Philippa Tyler, Consultant Musculoskeletal Radiologist,
Royal National Orthopaedic Hospital, Stanmore**

Philippa Tyler, BSc (Hons), MBBS, MRCS, FRCR, is a consultant musculoskeletal radiologist at the Royal National Orthopaedic Hospital NHS Trust in Stanmore, UK and an honorary lecturer at University College London, UK. She graduated in medicine from University College London and undertook her radiology training at St Mary's Hospital, London. She completed an MRI fellowship at St Mary's Hospital, London followed by a fellowship in musculoskeletal radiology at The Royal National Orthopaedic Hospital, Stanmore. Dr. Tyler's practice involves all aspects of interventional and diagnostic musculoskeletal radiology, and she has a special interest in spinal imaging.



**Dr Rikin Hargunani, Consultant Musculoskeletal Radiologist,
Royal National Orthopaedic Hospital, Stanmore**

Rikin Hargunani, BSc (Hons), MBBS, MRCS, FRCR, is a consultant musculoskeletal radiologist at the Royal National Orthopaedic Hospital NHS Trust in Stanmore and an honorary senior lecturer at University College London, UK. He graduated in medicine from University College London and completed radiology training at the Royal Free Hospital London prior to undertaking a fellowship in musculoskeletal radiology at Vancouver General Hospital in Canada. Dr. Hargunani is actively involved in undergraduate and postgraduate medical education and carries out all aspects of diagnostic and interventional musculoskeletal radiology.



**Dr Ian Pressney, Consultant in Musculoskeletal Radiology,
Royal National Orthopaedic Hospital, Stanmore**

Following clinical radiology training at both the University Hospital Southampton and Royal Sussex County Hospitals, Dr Pressney completed a fellowship in musculoskeletal radiology at the Royal National Orthopaedic Hospital. During this time he specialised in interventional musculoskeletal and spinal radiology including the use of imaging guidance in the diagnosis and treatment of both benign and malignant bone and soft tissue disorders. Dr Pressney maintains a research interest and is actively involved in the supervision and training of Musculoskeletal Imaging Fellows and Radiology Registrars. He was appointed as a Consultant Radiologist at the Royal National Orthopaedic Hospital in 2014 and undertakes all aspects of diagnostic and interventional musculoskeletal radiology.

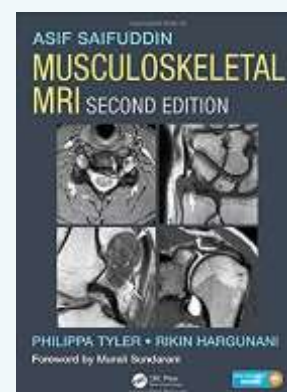
Musculoskeletal MRI, 2nd Edition

Delegates booking on All 5 Study Days are entitled to a complimentary copy of Musculoskeletal MRI, 2nd edition, made available at the first Study Day (19 Feb 2019).

Musculoskeletal MRI, Second Edition, Asif Saifuddin, Philippa Tyler, Rikin Hargunani
[CRC Press](#). 1266 Pages - 1175 Color Illustrations. ISBN 9781482247800 - CAT# K23649.

Musculoskeletal MRI covers the entire musculoskeletal system and related conditions, both common and rare. The text is neatly divided into sections based on the major anatomic divisions. Each section discusses anatomic subdivisions or joints, keeping sections on normal anatomy and pathologic findings close to each other, allowing radiologists to easily compare images of normal and pathologic findings.

With more than 4000 high-quality MR images, information is presented in an easy-to-read bulleted format, providing the radiologist with all the information required to make an informed diagnosis in the clinical setting. The new edition also includes a complimentary eBook as well as access to image downloads. Comprehensive and user-friendly in its approach, the book provides every radiologist, both consultant and trainee, with increased confidence in their reporting.



▲ Asif Saifuddin, Philippa Tyler and Rikin Hargunani are authors of *Musculoskeletal MRI*

About Infomed

www.infomedltd.co.uk

Infomed has been organising medical conferences, courses and workshops for doctors (and other health professionals) since 2004. Most of its courses are for emergency physicians, intensivists, radiologists, anaesthetists, paediatricians and psychiatrists, and most are designed for Consultants. The events are approved for CPD by the appropriate College or Society where applicable.

Infomed Research & Training Ltd
Northside House, 69 Tweedy Road, Bromley BR1 3WA

Registered in England No. 5200146 | VAT No. 887 8570 48

Courses run by Infomed

Infomed runs over 45 courses per annum.

Regular courses for radiologists include:

- MSK Ultrasound
- MSK MRI Interpretation and Reporting
- Stanmore Bone and Soft Tissue Tumours Imaging
- Emergency Radiology Workshop
- Update for the On-Call Radiologist
- CT Imaging in Polytrauma
- Head and Neck Imaging
- Paediatric Radiology Update for the General Radiologist
- Inflicted Injuries (NAI) for the Radiologist
- Abdominal and Pelvic MRI

Courses for other specialists include:

Practical Paediatrics Update; Medical Update for the Psychiatrist; Update for the General Anaesthetist; Update on Paediatric Emergencies; Paediatric Mental Health Update for the Consultant Paediatrician; The First Critical Hours in the Emergency Department; Anaesthesia for the Obese Patient; The Resuscitation Symposium; Regional Anaesthesia; Neurology Update for the Psychiatrist; Drugs for Medical Conditions: A Practical Update for the Psychiatrist; and Sedation and Regional Blocks in the Emergency Department

Infomed also runs a range of courses in ultrasound, both introductory and advanced, for such specialists as emergency doctors, acute physicians, anaesthetists, intensivists, orthopaedic surgeons, rheumatologists and sports physicians.



BOOKING FORM

The Stanmore In-depth MSK MRI Study Series 2019

A series of five practical, case-based, study days for Consultant Radiologists and Orthopaedic Surgeons organised by Infomed Research and Training in partnership with The Royal National Orthopaedic Hospital NHS Trust in central London, venue to be confirmed

Shoulder Study Day	Tuesday 19 February 2019
Elbow, Wrist & Hand Day	Tuesday 19 March 2019
Pelvis & Hip Study Day	Wednesday 12 June 2019
Knee Study Day	Wednesday 11 September 2019
Foot & Ankle Study Day	Monday 2 December 2019

COURSE FEES

Standard rate and discounts

Standard rate (any one Study Day):	£395 (inc. VAT)
Any 2 Study Days (5% off standard rate):	£751 (inc. VAT)
Any 3 Study Days (10% off standard rate):	£1,067 (inc. VAT)
Any 4 Study Days (15% off standard rate):	£1,343 (inc. VAT)
All 5 Study Days (20% off standard rate):	£1,580 (inc. VAT)

Delegates booking on **All 5 Study Days** are entitled to a complimentary copy of *Musculoskeletal MRI, 2nd edition*, made available at the first Study Day (19 Feb 2019).

Early bookers rate

An early bookers rate is offered only to those booking on All 5 Study Days (booking and paying before Fri 31 Aug 18):
All 5 Study Days: £1,500 (inc. VAT)

Course fee includes web access to lecture slides (pdf) when provided by faculty, lunch and refreshments.

How To Book

Complete delegate and payment details and post to:
Infomed Research and Training,
2nd Floor, Northside House,
69 Tweedy Road, Bromley BR1 3WA

You can also **BOOK ONLINE** at: www.infomedltd.co.uk

Confirmation, venue map and receipt will follow by email.

General queries: tel. 020 3236 0810,
e-mail courses@infomedltd.co.uk

For a copy of this programme: www.infomedltd.co.uk

For information on accommodation: www.infomedltd.co.uk

DELEGATE DETAILS

I would like to attend (PLEASE TICK):

- All 5 Study Days**
(19 Feb, 8 Apr, 12 Jun, 11 Sep and 2 Dec 2019)

OR the following Study Days only:

- Shoulder Study Day (Tue 19 Feb 2019)
 Elbow, Wrist & Hand Day (Tue 19 Mar 2019)
 Pelvis & Hip Study Day (Wed 12 Jun 2019)
 Knee Study Day (Wed 11 Sep 2019)
 Foot & Ankle Study Day (Mon 2 Dec 2019)

Title First Name

Surname

Job Title

Hospital

Address for correspondence Home Hospital

Post Code Country

Tel

Email *

* Required for confirmation

Special needs and special dietary requirements

.....

PAYMENT DETAILS

- Please charge my credit/debit card with the sum of £

MasterCard Visa

Card holder name (exactly as it appears on the card):

.....

Card Number

/ /

Valid From / Expiry Date /

CVV Number
(i.e. the last 3 digits on central signature strip on reverse side of the card)

Billing name

Billing address

.....

Signature

- Please find enclosed a cheque for the amount of £ made payable to **Infomed Research and Training Limited**, 2nd Floor, Northside House, 69 Tweedy Road, Bromley BR1 3WA

- By **BACS**: Barclays Bank, Bromley Branch, 167 High Street, Bromley, Kent BR1 1NL, Sort code: 20-12-26 Account: 43929159

- Please **invoice** my organisation, quoting **P.O. No** (**Purchase Order No. is required**)
NB Booking will remain 'provisional' until Purchase Order is received. Please note that **invoicing** details should include the **name**, contact **number** and **address** of the **person responsible for payment**:

Name

Department

Organisation

Address

Post Code

Tel

Email

FREQUENTLY ASKED QUESTIONS

Question: Can I book and pay for "All 5 Study Days", but nominate a different delegate to attend each Study Day?

Answer: Yes. You will need to send us details of each delegate as soon as you have them or, in any case, at least two weeks before the respective Study Day.

Question: If I book and pay for "All 5 Study Days" but subsequently find that I am unable to attend one of the Study Days, can a colleague attend in my place?

Answer: Yes. You will just need to send us details of your substitute at least a week before the Study Day.

TERMS AND CONDITIONS

1) The subscription fee includes password protected web access to lecture slides (pdf) when provided by faculty, lunch and refreshments. 2) The completed booking form together with full payment must be sent to Infomed Research and Training Limited to secure a booking. Submission of this booking constitutes a legally binding agreement. 3) Payment must be received in full prior to the event. Course details will be issued subject to receipt of payment. We cannot be held responsible for the non-arrival of booking information: if you have **not** heard from us within 7 days of your booking, then please contact us. 4) Bookings can be made by telephone but payment must be made in full by credit card at time of booking. 5) Written cancellations received at least 6 weeks before the date of the first Study Day booked will be accepted and refunded minus an administration charge of £70. We regret that no refunds can be made for cancellations received after that date, for whatever reason, although substitutions will be accepted if notified in writing at least 5 days before the Study Day. 6) The Company reserves the right to alter the date, content and timing of the programme or the identity of the speakers due to reasons beyond its control. Under these circumstances, the Company will not refund delegates any expenditure made on pre-booked accommodation or travelling. 7) The Company does not accept responsibility for loss/damage of delegates' property/personal effects whilst at the Course.

Infomed Research and Training Limited. Registered in England No. 5200146. Registered Offices: Brooklands House, 4a Guildford Road, Woking GU22 7PX. VAT No. 887 8570 48